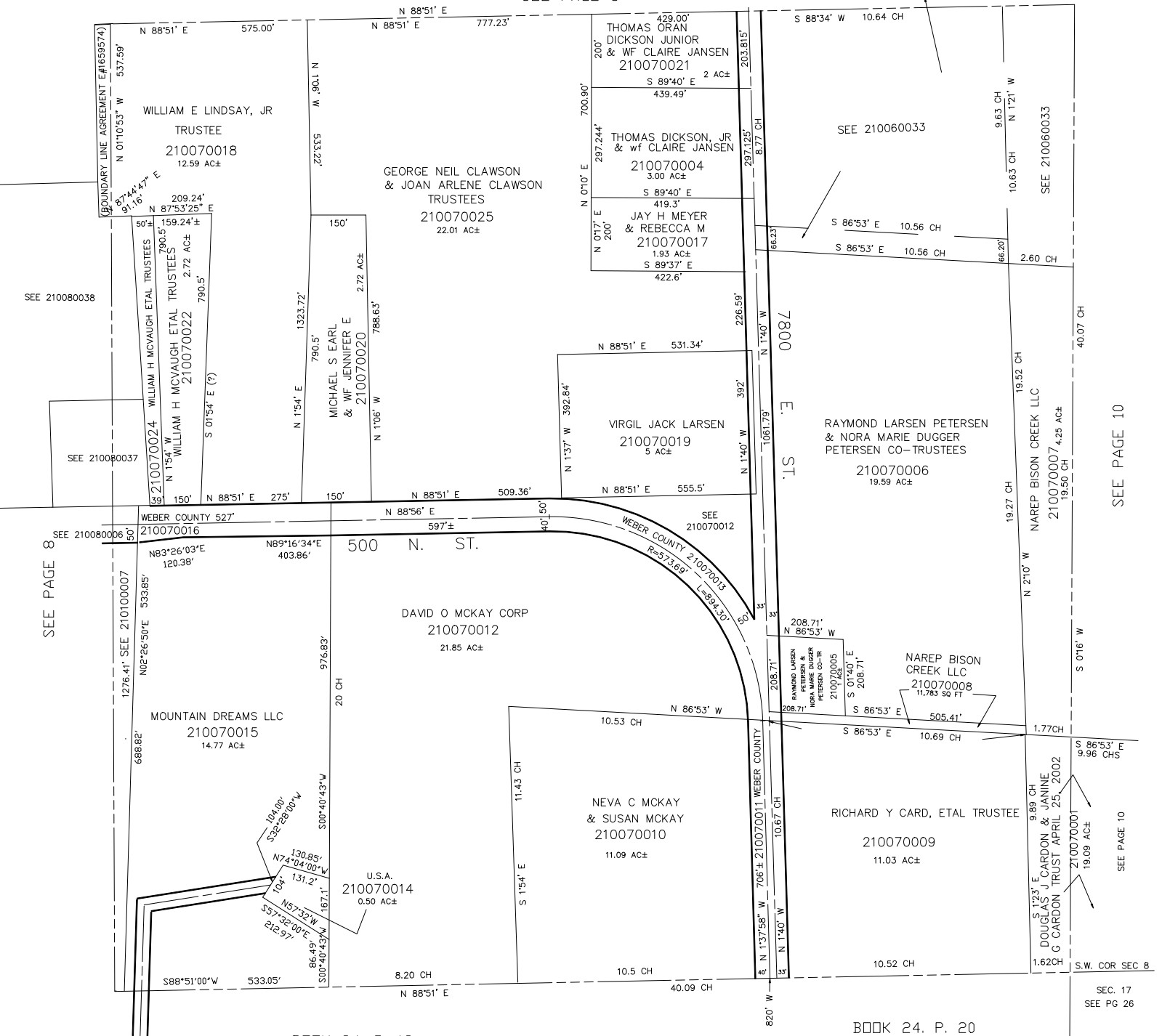


S.E. 1/4  
SECTION 7, T.6N., R.2E., S.L.B. & M.

IN WEBER COUNTY  
SCALE 1" = 200'

TAXING UNIT: 58

SEE PAGE 6



SEE PAGE 8

SEE PAGE 10

SEE PAGE 10

SEC. 17  
SEE PG 26

BOOK 24. P. 13

BOOK 24. P. 20

MTT 04-96